

KINGI® METAL ROOFING SCREWS

THE BEST CORROSION RESISTANCE
ON THE MARKET

QUICKEST AND EASIEST
INSTALLATION



KINGI®

CROWN OF QUALITY

A LIFELONG METAL ROOFING WITH KINGI® METAL ROOFING SCREWS

A durable, lifelong metal roof can only be achieved with KINGI® metal roofing screws. The corrosion resistance of KINGI® metal roofing screws meets the same requirements as the best metal roofs on the market. Excellent characteristics of the screws are a result of a careful and innovative product development.

With KINGI® metal roofing screws you can easily install metal steel sheets on roofs and walls. Metal roof is designed to resist the effects of challenging weather conditions. Metal steel sheets are typically used for residential and office buildings as well as industrial and farming buildings and warehouses. KINGI® metal roofing screws guarantee the durability of the roof and rest of the building.



ROUNDED EDGES

Radialco-design makes it possible to have a sufficient coating thickness all over the head of the screw.



3-LAYER COATING SYSTEM

The patented Durabl3-coating system withstands the mechanical pressure caused by the power drill. It also protects the screws against corrosion.



CROWN

The EU model-protected CrownD-design enables water to flow away from the top of the screw reducing the risk of corrosion. The CrownD-design makes the KINGI® metal roofing screws recognizable.



HIGHER HEAD

The CrownD-designed screw head fits extremely well with the socket resulting in firm fitting.



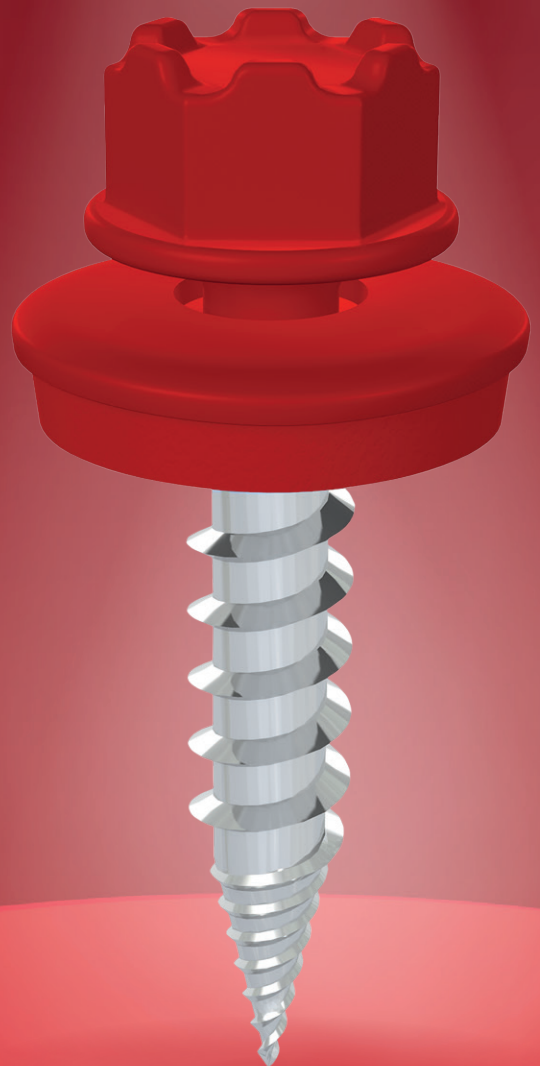
EXPRESS SCREW TIP

The patented FastFX™-express screw tip drills quickly through the overlapped metal steel sheets. It makes it easy to drill the screws exactly where you want them without scratching the colour coated surface of the sheet.



CORROSION CLASS C4

The KINGI® metal roofing screw is a painted, non-alloyed, steel screw with a patented Durabl3-coating system that makes it long lasting also in harsh weather conditions. The powder coating system of the KINGI® metal roofing screws is made in accordance with the DIN 55633-standard, and it meets the demands of corrosion class C4 (EN 12944-2).



KINGI® CROWN OF QUALITY

QUICK AND EASY INSTALLATION

NO SLIPPING

The smart design of KINGI® metal roofing screws ensures an easy installation of the metal roof. The patented FastFX™-screw tip drills quickly into the intended spot, and does not slip on the colour coated sheet. Thanks to its unique thread, KINGI® metal roofing screws drill quickly also through overlapping metal steel sheets.

NO SCRATCHES

KINGI® metal roofing screws can be easily drilled into the intended spot without scratching or chipping the metal steel sheet. The accurate crown-shaped screw head secures a firm hold to the socket making KINGI® metal roofing screws easily and tightly fitted.



THE BEST DURABILITY AND ECO-FRIENDLINESS ON THE MARKET

KINGI® metal roofing screw has been developed thoroughly to meet installation, sunburn and harsh corrosion environments. Long lasting KINGI® screw is also an ecological choice as the long lifecycle reduces also need for replacements and cuts down the amount of waste.

NO RUST

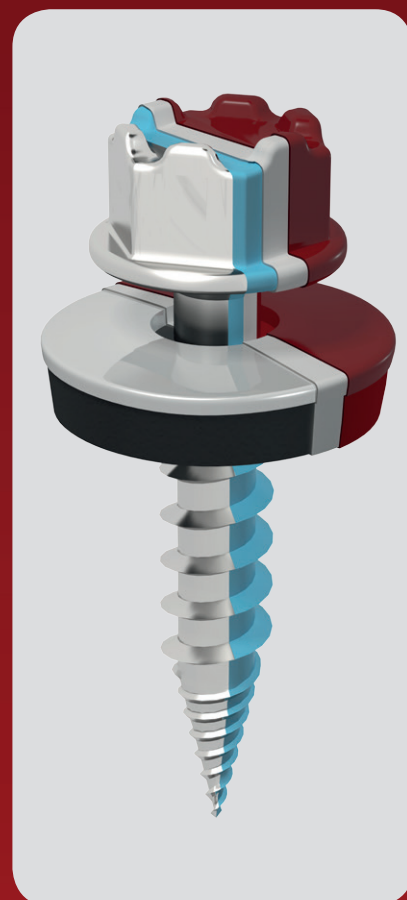
The patented Durabl3-coating is resistant to mechanical stress and protects the screws against corrosion even in environment category C4. The model protected CrownD-design enables water to flow away from the top of the screw reducing the risk of corrosion. Radialco-design provides sufficient coating thickness of the screw head, including the edges.

NO LEAKS

Durable aluminium protects the washer against deformation during installation and provides corrosion resistance in environment category C4. The chemical composition of the rubber gasket of the washer developed in Europe, its optimum thickness and careful vulcanization ensure a secure seal in environment C4 as well as in the harsh northern climate.

NO BREAKS

KINGI® metal roofing screws are made of controllably hardened steel, which provides strength and durability needed for installation. They are produced in accordance with a certified quality system. The leak-tight washer and zinc layer of the screw shaft with high-quality passivation protect the screws against breakage.



NO RUST

WARRANTY

20
YEARS

NO LEAKS

WARRANTY

30
YEARS

NO BREAKS

WARRANTY

50
YEARS

CROWN OF QUALITY





Authorized resellers and installers can be recognized from a KINGI® seal.

MANUFACTURER
Kingi



CORROSION CLASS C4

The KINGI® metal roofing screw is a painted, non-alloyed, steel screw with a patented Durabl3-coating system that makes it long lasting also in harsh weather conditions. The powder coating system of the KINGI® metal roofing screws is made in accordance with the DIN 55633-standard, and it meets the demands of corrosion class C4 (EN 12944-2).

ISO 9001 – QUALITY CERTIFICATE

The whole production process is tested and certified according to the ISO 9001 - quality standard. Quality assurance of the product is in accordance with standards SFS-EN ISO 3269 and SFS-EN ISO 10666:1999. Product quality is monitored continuously with the corrosion tests conducted by third-party research bodies.



WARRANTIES

20 year appearance and corrosion-resistance guarantee
30 year leakage-free guarantee
50 year mechanical guarantee

PRODUCT DATA OF KINGI® METAL ROOFING SCREWS

<i>Length of the screw</i>	25 mm or 32 mm	
<i>Material of the screw</i>	C1022 or equal	Core and surface hardened with non-alloy steel.
<i>Electrical zincing</i>	12 µm	Gives cathodic protection for the steel.
<i>Pre-treatment</i>	Silane	Maximizes the adhesion of the paint and corrosion resistance.
<i>Prime coating</i>	Epoxide polyester, 60 µm	Contains chemical components to improve the adhesion of the paint and slows down corrosion.
<i>Top coating</i>	Polyester, 60 µm	The top coating is developed for building facades for appearance and corrosion resistance.
<i>Screw head</i>	CrownD-head	Fits firmly into the socket and enables a firm installation. The EU model protected design enables water to flow away from the top part of the screw reducing the risk of corrosion.
<i>The metal part of the washer</i>	1 mm thick aluminium alloy EN AW 5052 H32	Maximum mechanical durability and corrosion resistance even in the harshest conditions.
<i>Gasket part of the washer</i>	EPDM 2,5 mm, 70 Shore A	Optimized for a good, firm installation and a long lifecycle.
<i>Screw tip</i>	FastFX™ -screw tip	The special screw tip design allows fast penetration of the sheet and firm hold on the metal sheet. The special tip does chip the metal sheet, and it will stay steady during the installation.

Package data

Screw size	4.8 x 25 or 4.8 x 32
Sales package	250 screws
Wholesale package	3000 screws
Euro-pallet	60 wholesale packages (4.8 x 25), total 180 000 screws 48 wholesale packages (4.8 x 32), total 144 000 screws
Minimal delivery batch	1 pallet / colour

RAL, RR and NCS colours. Stock colours:



 **KINGI®**
CROWN OF QUALITY

✉ Ilveskaari 12, 01900 Nurmijärvi
FINLAND
☎ +358 400 154 888
✉ kingi@kingi.fi
www.kingi.fi